



FORMATION EVALUATION LOG



WELL : BASKER-5

FROM (m): 2150 TO (m): 3150 SCALE: 1/ 500

POSITION		HOLE / CASING INFO	
Country : AUSTRALIA	Latitude : 38°17'59.31"S	17 1/2" Hole to (mMDRT) : 1012m	Spud Date : 26-02-2006
Basin : GIPPSLAND	Longitude : 148°42'23.80"E	12 1/4" Hole to (mMDRT) : xxxm	Total Depth Date : xx-xx-2006
Field : BASKER	UTM Co-ord X (m E) : 650106.2	8 1/2" Hole to (mMDRT) : 3357m	Total Depth (mRT) : 3357m
Permit : VIC/L26	UTM Co-ord Y (m N) : 5761989.6	13 3/8" Shoe at (mMDRT) : 1001.3m	T.V.D. (mSS MSL) : 3072m
Well Type : DEVELOPMENT	RT-LAT (m) : 21.5	9 5/8" Shoe at (mMDRT) : xxx.xm	Status :
Rig Name : OCEAN PATRIOT	RT-Seabed (m) : 175.1	7" Shoe at (mMDRT) : xxxm	

ABBREVIATIONS

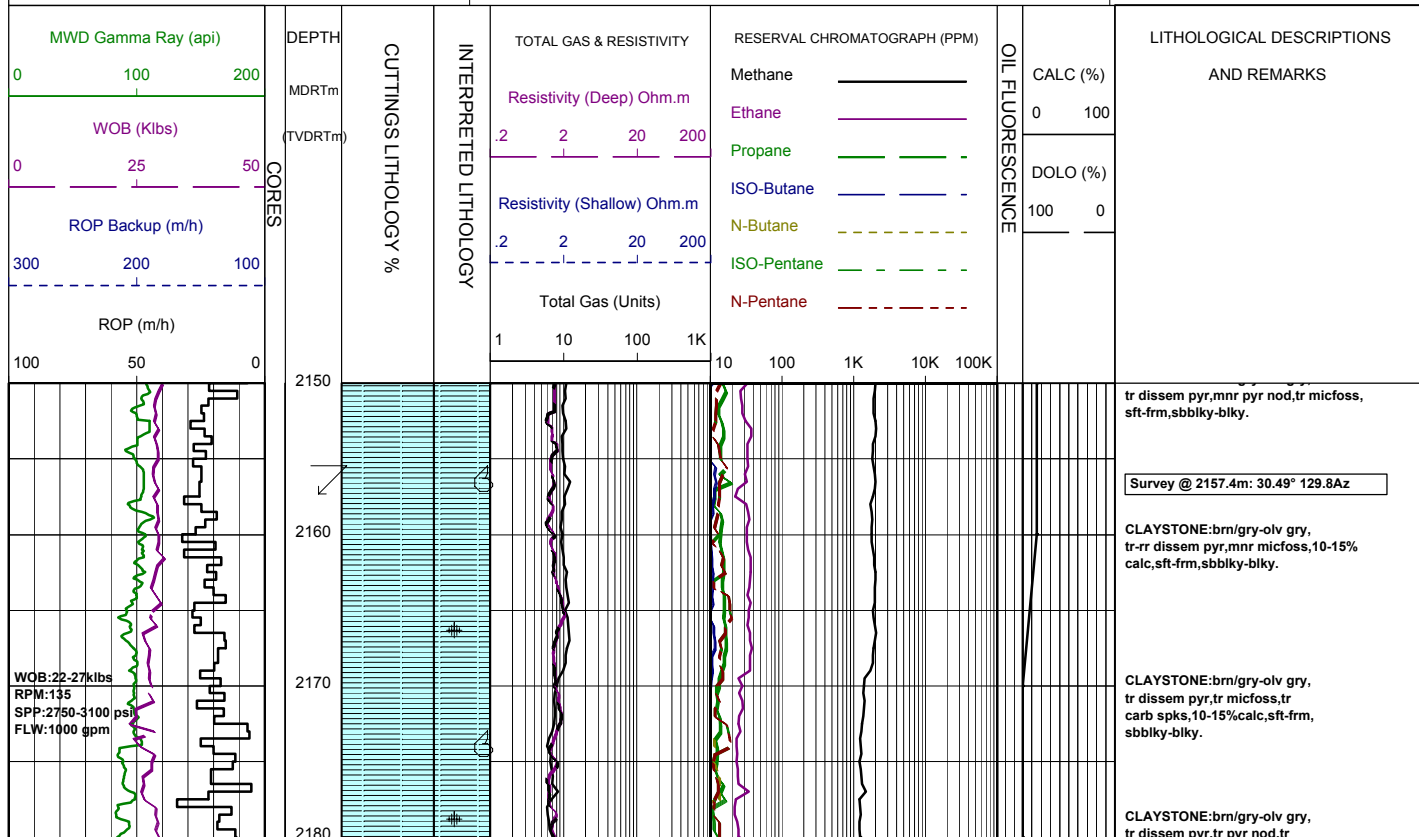
MW MUD WEIGHT	NB NEW BIT
FV FUNNEL VISCOSITY	RR RERUN BIT
PV PLASTIC VISCOSITY	CB CORE BIT
YP YIELD POINT	WOB WEIGHT ON BIT
FC FILTER CAKE	RPM REVS PER MINUTE
SOL SOLIDS	FLC FLOW CHECK
WL FILTRATE	CR CIRCULATE RETURNS
SD SAND - %	PR POOR RETURNS
S SALINITY - PPM	NR NO RETURNS
RM MUD RESISTIVITY	BG BACKGROUND GAS
RMF MUD FILTRATE	TG TRIP GAS
C CARBIDE TEST	STG SHORT TRIP GAS
LAT LOGGED AFTER TRIP	CG CONNECTION GAS
DS DEVIATION SURVEY	SG SWAB GAS
	SVG SURVEY GAS

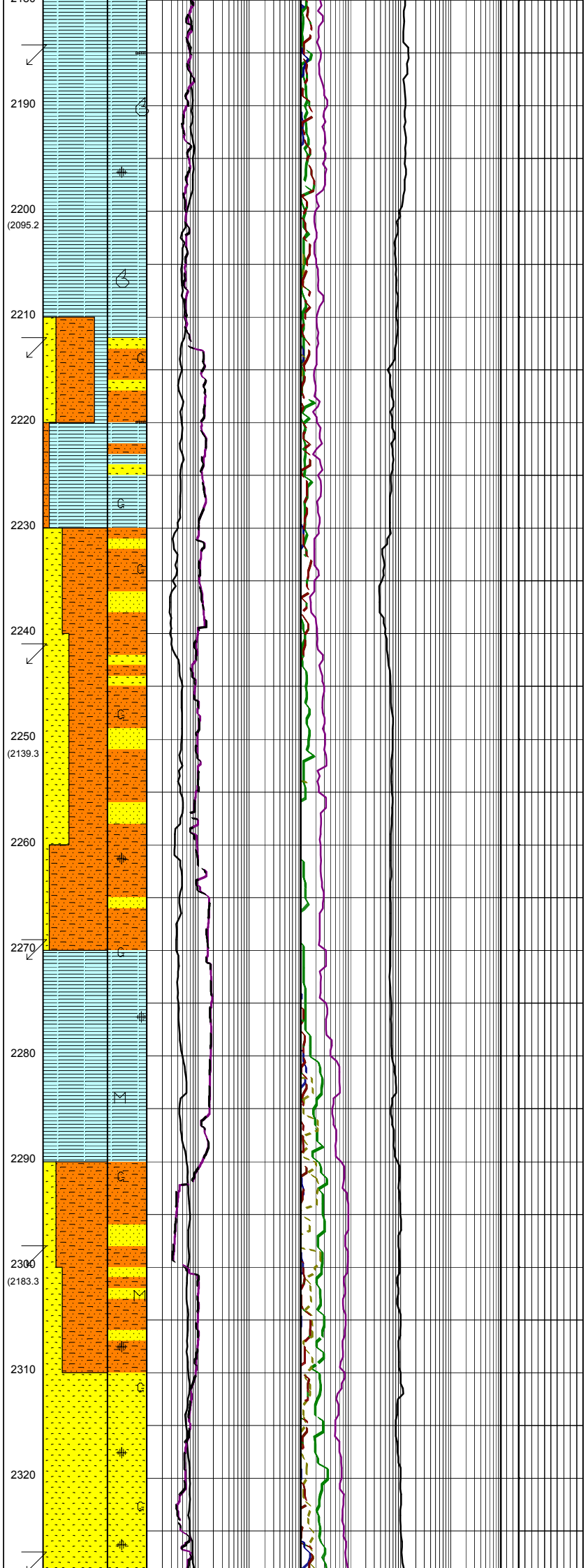
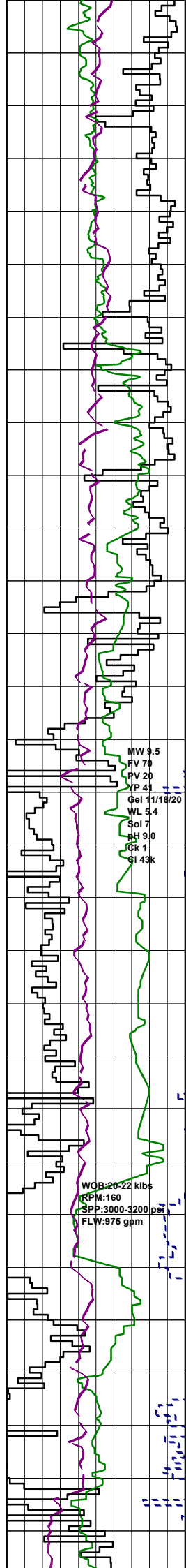
LITHOLOGY LEGEND

	Claystone		Limestone		Brachiopoda
	Siltstone		Dolomite		Cement
	ar. Silt ar		Coal		Sponges
	Fine SST		Gypsum		Glauconite
	Medium SST		Lithic Fragment		Pyrite
	Coarse SST		Foraminifera		Iron Minerals
	Marl		Fossils		Mica
	Clay, Limestone		Bryozoa		Carb Fragments

ENGINEERING LEGEND

	Shoe		FIT
	Mud loss		Mud gain
	Deviation survey		
	DST		
	Test		
	Sidewall Core		
	Core		
	RFT		





micfoss, mnr carb spks, tr calc, sft-frm, sbbiky-sbfiss.

Survey @ 2186.1m: 29.68° 128.9Az

CLAYSTONE: brn/gry-olv gry, tr dissem pyr, tr carb lams, mnr carb spks, tr calc, sft-frm, sbbiky-sbfiss.

CLAYSTONE: brn/gry-olv gry, tr dissem pyr, tr carb spks, tr calc, tr micfoss, sft-frm, sbbiky-blky.

CLAYSTONE: brn/gry-olv gry, tr dissem pyr, tr calc, tr micfoss, sft-frm, sbbiky-sbfiss tr blky.

Survey @ 2214.3m: 27.97° 129.8Az

SANDSTONE: clr-lt yel, crs-f, tr v crs, pr srt, sbrnd-sbang, tr ang, pr inf por, no fluor.

ARGILLACEOUS SILTSTONE: orgn brn-yel brn, tr calc, tr glauc, sft-frm, sbbiky-blky.

SILTY CLAYSTONE: orgn brn-yel brn, tr calc, tr glauc, tr carb spks, sft-v sft, occ disp, sbbiky-blky, occ amor.

ARGILLACEOUS SILTSTONE: grn/brn-gry/brn, com glauc, v sft-frm, occ disp, blky-sbbiky, occ amor.

Survey @ 2242.7m: 27.61° 129.6Az

SANDSTONE: clr-trnsl, med-vf, pr srt, sbang-sbrnd, com glauc, lse, pr inf por, no fluor.

ARGILLACEOUS SILTSTONE: grn/brn-gry/brn, com glauc, sft-disp, blky-amor.

ARGILLACEOUS SILTSTONE: grn/brn-gry/brn, com glauc, tr-rr dissem pyr, sft-disp, blky-amor.

Survey @ 2271.4m: 28.48° 130.6Az

SILTY CLAYSTONE: grn/brn-gry/brn, com glauc, tr-rr dissem pyr, sft-disp, blky-amor.

SILTY CLAYSTONE: grn/brn-gry/brn, com glauc, tr-rr dissem pyr, tr micmic, sft-disp, blky-amor.

ARGILLACEOUS SILTSTONE: grn/brn-gry/brn, com glauc, tr-rr dissem pyr, tr micmic, sft-disp, blky-amor.

Survey @ 2300.1m: 28.83° 130.5Az

SANDSTONE: clr-trnsl, vf-med, tr crs pr srt, ang-sbang, tr glauc, tr dissem pyr, tr micmic, lse, gd inf por, no fluor.

SANDSTONE: clr-trnsl, med-vf, tr crs pr srt, ang-sbang, occ brn/gry sity mtx, tr glauc, tr dissem pyr, tr micmic, lse, gd inf por, no fluor.

SANDSTONE: clr-trnsl, med-vf, tr crs pr srt, ang-sbrnd, occ brn/gry sity mtx, tr glauc, tr dissem pyr, lse, gd inf por, no fluor.

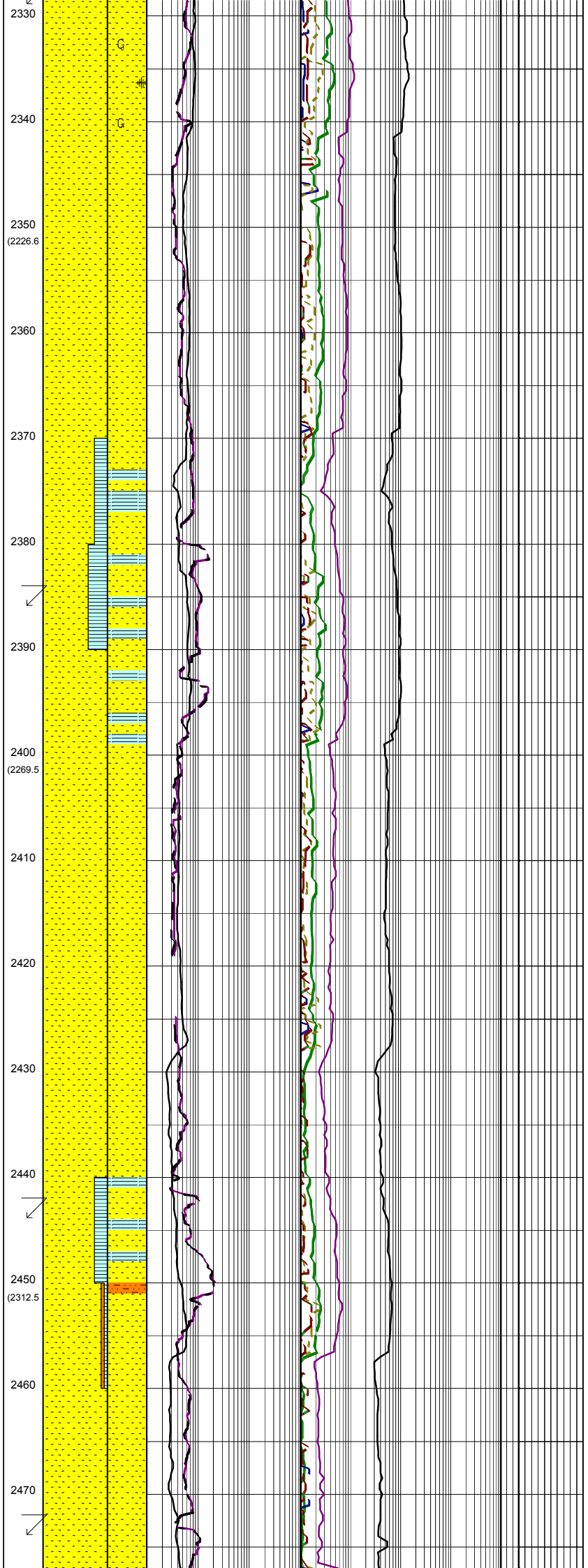
Survey @ 2328.7m: 30.10° 130.3Az

WOB: 10-15 kibs
RPM: 130-140
SPR: 2650-2750 psi
FLW: 900 gpm

16005-06

WOB: 6-14 kibs
RPM: 145
SPR: 2993-3390 psi
FLW: 1000 gpm

MW: 9.5
FV: 76
PV: 21
YP: 43
Gel: 12/19/23
WL: 4.8
Sol: 8
pH: 9.0
Ck: 1
Cl: 43



SANDSTONE: clr-trnsl, f-med, tr crs, tr vf, mod srt, ang-sbrnd, occ brn/gry slty mtx, tr glauc, tr dissem pyr, lse, gd inf por, no fluor.

Survey @ 2357.5m: 31.19° 129.7Az

SANDSTONE: clr-trnsl, f-med, occ crs, mod srt, sbang-sbrnd, sph-sbsph, sil & pyr cmt, pred cl mtx, occ calc mtx, tr kao mtx, tr-com glauc, lse, gd inf por, no fluor

CLAYSTONE: med gry, occ brn/gry, com glauc, v sft, amor, partly w/out.

Survey @ 2386.4m: 30.97° 129.6Az

SANDSTONE: clr-trnsl, tr med dk gry-dk gry, pred crs-v crs, occ f-med, mod wl srt, sbang-sbrnd, sph-sbsph, tr sil & pyr cmt, tr kao mtx, tr glauc, lse, gd inf por, no fluor.

SANDSTONE: clr-trnsl, f-med, occ crs, mod srt, sbang-sbrnd, sph-sbsph, tr sil & pyr cmt, tr kao mtx, tr glauc, lse, gd inf por, no fluor.

Survey @ 2444.3m: 30.32° 129.7Az

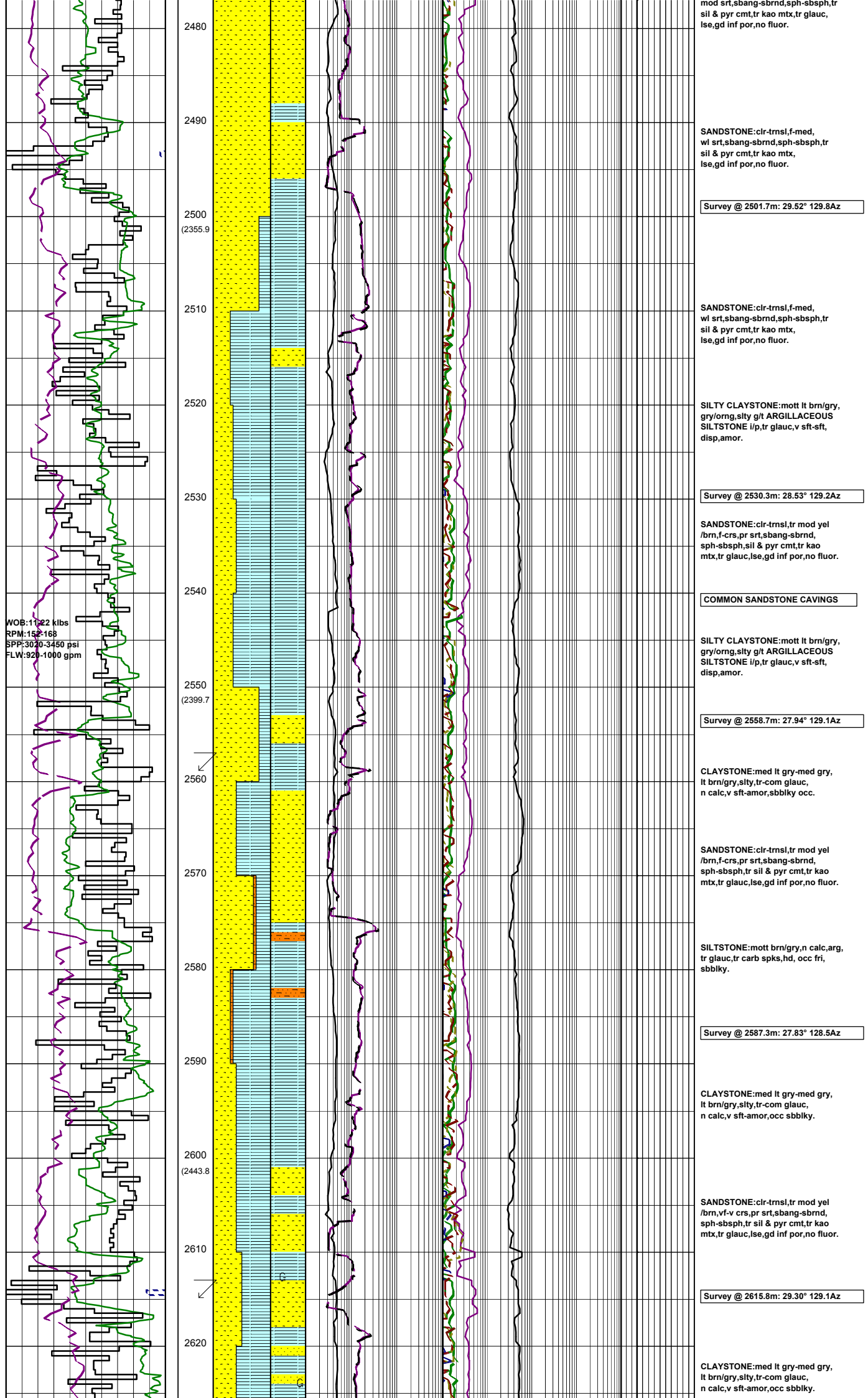
SILTSTONE: brn/gry, tr carb spks, pred fri, occ frm-hd, blk-y-sbbiky.

CLAYSTONE: med dk gry, tr pyr, frm-hd, sbbiky, occ sbfiss.

SANDSTONE: clr-trnsl, vf-crs, pr srt, sbang-sbrnd, sph-sbsph, tr sil & pyr cmt, tr kao mtx, tr chl, lse, gd inf por, no fluor.

Survey @ 2473.0m: 29.94° 129.8Az

SANDSTONE: clr-trnsl, vf-f,



mod srt,sbang-sbrnd,sph-sbsph,tr sil & pyr cmt,tr kao mtx,tr glauc, lse,gd inf por,no fluor.

SANDSTONE:clr-trmsl,f-med, wl srt,sbang-sbrnd,sph-sbsph,tr sil & pyr cmt,tr kao mtx, lse,gd inf por,no fluor.

Survey @ 2501.7m: 29.52° 129.8Az

SANDSTONE:clr-trmsl,f-med, wl srt,sbang-sbrnd,sph-sbsph,tr sil & pyr cmt,tr kao mtx, lse,gd inf por,no fluor.

SILTY CLAYSTONE:mott lt brn/gry, gry/orng,slty g/t ARGILLACEOUS SILTSTONE i/p,tr glauc,v sft-sft, disp,amor.

Survey @ 2530.3m: 28.53° 129.2Az

SANDSTONE:clr-trmsl,tr mod yel /brn,f-crs,pr srt,sbang-sbrnd, sph-sbsph,sil & pyr cmt,tr kao mtx,tr glauc,lse,gd inf por,no fluor.

COMMON SANDSTONE CAVINGS

SILTY CLAYSTONE:mott lt brn/gry, gry/orng,slty g/t ARGILLACEOUS SILTSTONE i/p,tr glauc,v sft-sft, disp,amor.

Survey @ 2558.7m: 27.94° 129.1Az

CLAYSTONE:med lt gry-med gry, lt brn/gry,slty,tr-com glauc, n calc,v sft-amor,sbbkly occ.

SANDSTONE:clr-trmsl,tr mod yel /brn,f-crs,pr srt,sbang-sbrnd, sph-sbsph,tr sil & pyr cmt,tr kao mtx,tr glauc,lse,gd inf por,no fluor.

SILTSTONE:mott brn/gry,n calc,arg, tr glauc,tr carb spks,hd, occ fri, sbbkly.

Survey @ 2587.3m: 27.83° 128.5Az

CLAYSTONE:med lt gry-med gry, lt brn/gry,slty,tr-com glauc, n calc,v sft-amor,occ sbbkly.

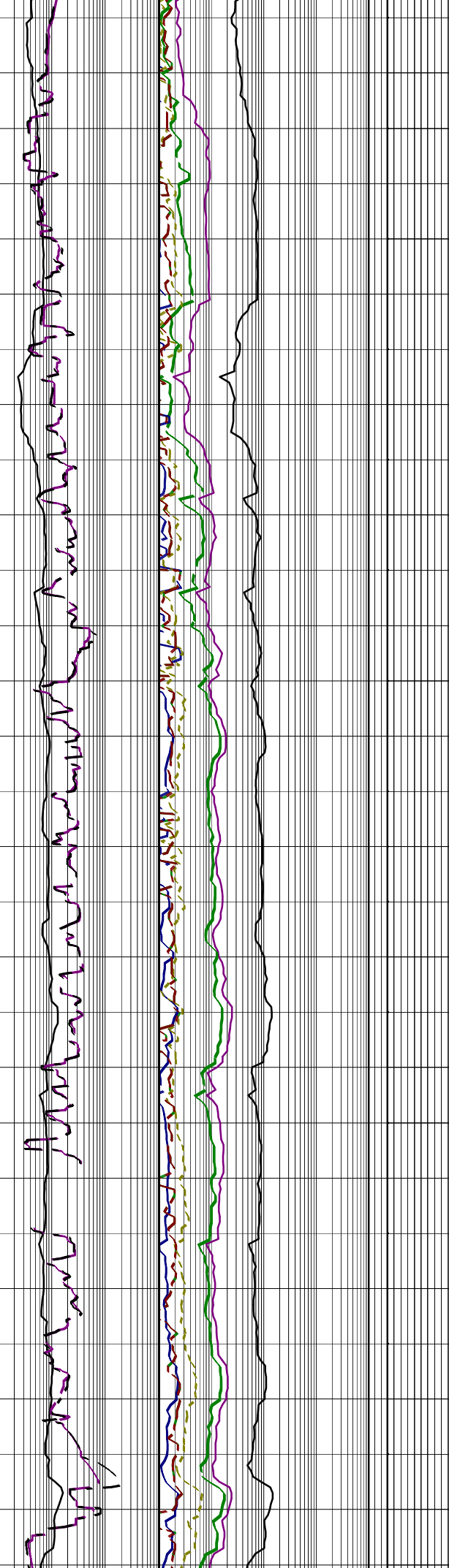
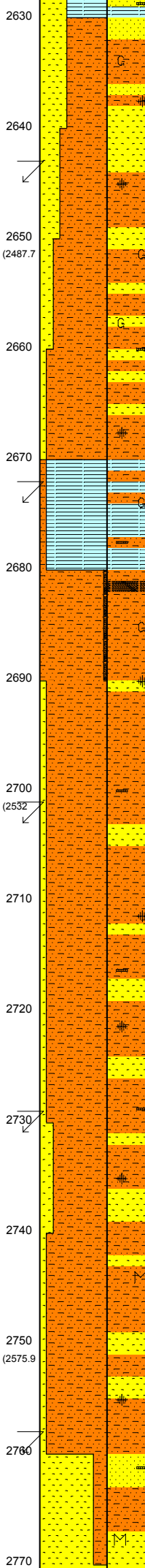
SANDSTONE:clr-trmsl,tr mod yel /brn,vf-v crs,pr srt,sbang-sbrnd, sph-sbsph,tr sil & pyr cmt,tr kao mtx,tr glauc,lse,gd inf por,no fluor.

Survey @ 2615.8m: 29.30° 129.1Az

CLAYSTONE:med lt gry-med gry, lt brn/gry,slty,tr-com glauc, n calc,v sft-amor,occ sbbkly.

WOB:20-24 kilbs
RPM:155
SPP:3100-3300 psi
FLW:960 gpm

WOB:20-28 kilbs
RPM:150
SPP:3040-3060 psi
FLW:918 gpm



SANDSTONE:clr-tmsl,f-crs,pr srt, sbang-sbrnd,tr-rr pyr nod,com glauc, tr carb mat,lse,pr inf por,no fluor.

Survey @ 2644.5m: 28.38° 129.1Az

ARGILLACEOUS SILTSTONE:med lt gry-med gry,com glauc, tr pyr nod & dissem,tr carb mat, disp frm,amor-sbbiky.

SANDSTONE:clr-tmsl, vf-crs,tr v crs,v pr srt,sbrnd-sbang, tr carb mat,tr glauc,tr pyr nod & dissem,lse,gd inf por,no fluor.

ARGILLACEOUS SILTSTONE:med lt gry-med gry,com glauc, tr pyr nod & dissem,tr carb mat, disp frm,amor-sbbiky.

Survey @ 2676.5m: 27.29° 128.4Az

SILTY CLAYSTONE:lt olv gry- lt gry,tr off wh,tr calc,kaol i/p, tr glauc,tr pyr nod & dissem,tr carb mat,disp-sft,amor-sbfiss.

ARGILLACEOUS SILTSTONE: lt olv gry-lt gry,tr-rr dk gry,tr off wh,mnr calc,kaol i/p,tr pyr dissem, tr glauc,sft-frm,tr disp,sbbiky-sbfiss, tr amor.

COAL:olv blk-gry/brn,dll-ea, slty,mod hd-frm,com brit,sbfiss-sbbiky,ang-unevn.

SANDSTONE:clr-tmsl,f-crs,tr v crs,pr srt,sbrnd-sbang,lse,gd inf por,no fluor.

Survey @ 2702.5m: 27.35° 128.8Az

ARGILLACEOUS SILTSTONE: lt olv gry-lt gry,tr-rr dk gry,tr off wh,mnr calc,kaol i/p,tr pyr nod, tr carb mat,sft-frm,tr disp,sbbiky-sbfiss,tr amor.

SANDSTONE:clr-tmsl,f-crs,tr v crs,pr srt,sbang-ang,lse,fr inf por,no fluor.

ARGILLACEOUS SILTSTONE: lt olv gry-lt gry,tr off wh, kaol i/p,tr pyr nod, tr carb mat, sft-frm,tr disp,sbbiky-blky, tr amor.

Survey @ 2731.3m: 28.69° 129.1Az

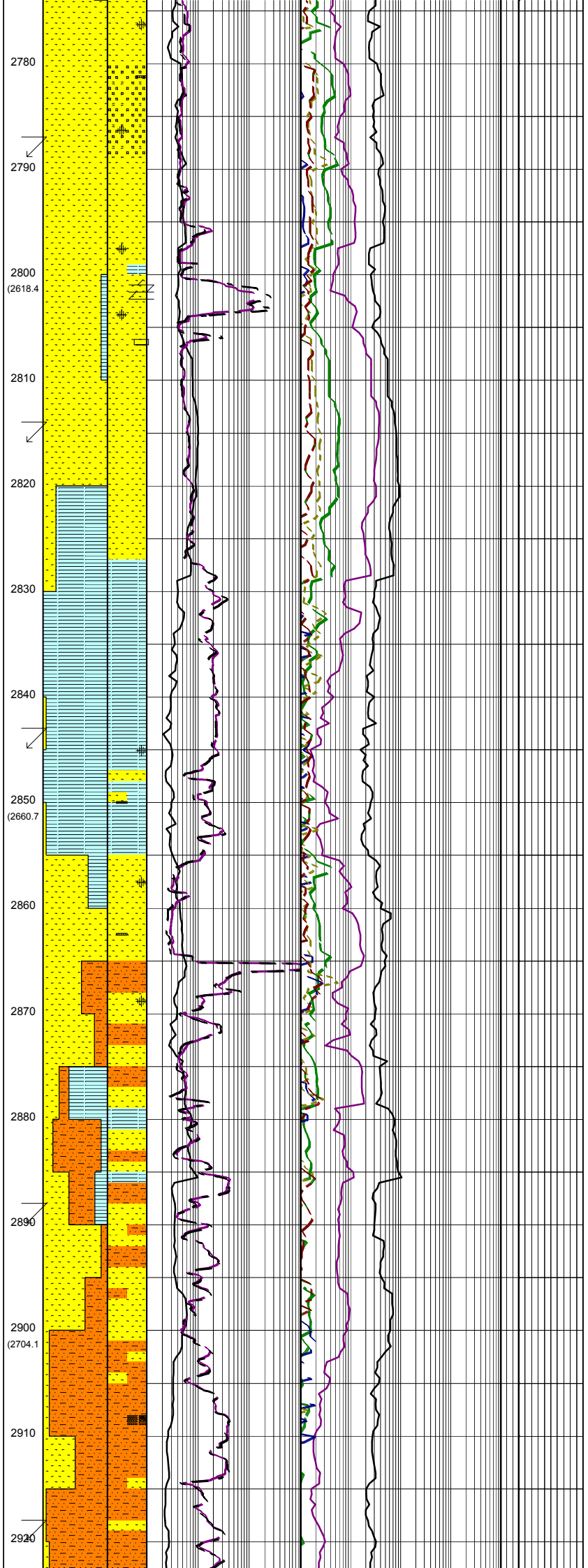
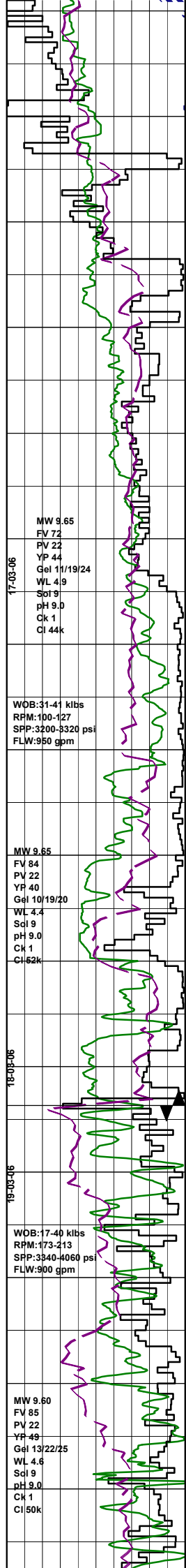
SANDSTONE:clr-tmsl,f-med, tr crs,pr srt,sbrnd-sbang,lse,gd inf por,no fluor.

ARGILLACEOUS SILTSTONE: lt olv gry-lt gry,tr off wh, kaol i/p,tr pyr nod, tr carb mat, tr mic,sft-frm,tr disp,blky-sbbiky, tr amor.

SANDSTONE:clr-tmsl,f-med, tr crs, tr vf,pr srt,sbrnd-sbang,lse, gd inf por,no fluor.

Survey @ 2759.9m: 30.71° 130.0Az

SANDSTONE:clr-tmsl,tr opq, vf-crs,tr v crs,v pr srt,sbang-sbrnd, tr calc, tr pyr nod, tr mic, tr carb mat,lse,gd inf por, no fluor.



SANDSTONE:clr-trmsl,tr opq,
vf-crs,com v crs,v pr srt,sbang-
sbrnd,tr pyr nod & cmt aggs i/p,
lse,tr frm aggs,gd inf por,no fluor.

Survey @ 2788.2m: 33.03° 129.3Az

SANDSTONE:clr-trmsl,tr opq,
crs-f,com v crs,v pr srt,rnd-sbang,
tr ang,tr qtz ovghs,tr pyr nod & cmt
aggs,lse,tr frm-mod hd,gd inf por,
no fluor.

SANDSTONE:clr-trmsl,tr opq,
f-crs,tr v crs,v pr srt,rnd-sbang,
tr ang,tr qtz ovghs,tr pyr nod & cmt
aggs,tr dolo cmt,lse,tr frm-mod hd,
gd inf por,no fluor.

Survey @ 2816.4m: 33.18° 128.2Az

CLAYSTONE 1:mott v lt-lt gry,med dk
gry,tr silt,tr calc,rr micfoss,tr carb
carb mat,amor-sbbkly,v sft-sft,
occ frm.

CLAYSTONE 2:dk gry,sl calc,frm,
bkly-spintry,homogen
Cavings:50mmx10mm in coarse sieve
sample.

Survey @ 2845.3m: 31.25° 128.1Az

CLAYSTONE:dk gry-lt gry,com off
wh,occ aren i/p,tr calc i/p,tr pyr
nod,tr carb mat,frm-sft,tr disp,
bkly-sbfiss,tr amor.

SANDSTONE:clr-trmsl,tr opq
f-crs,tr v crs,v pr srt,ang-rnd,
tr pyr nod,tr carb mat,tr sil lams,
tr qtz ovghs,lse,gd inf por,
no fluor.

ARGILLACEOUS SILTSTONE:
lt gry-dk gry,tr off wh,tr pyr nod,
tr carb mat,frm-sft,tr disp,bkly-
sbbkly,tr amor.

SANDSTONE:clr-trmsl,tr opq,
f-med,pr srt,sbang-sbrnd,tr rock
flour,tr pyr nod,tr carb mat,lse,fr
inf por,no fluor.

Rmf 2878m:0.08 ohm @ 26°C

Bit#: SMITH BVCP5
SIZE:311mm (12.25")
JETS:3x24, 1x16
IN: 2878m OUT:xxxxm
RUN:xxxxm HRS:xx.0
COND:

Survey @ 2890.1m: 29.25° 127.8Az

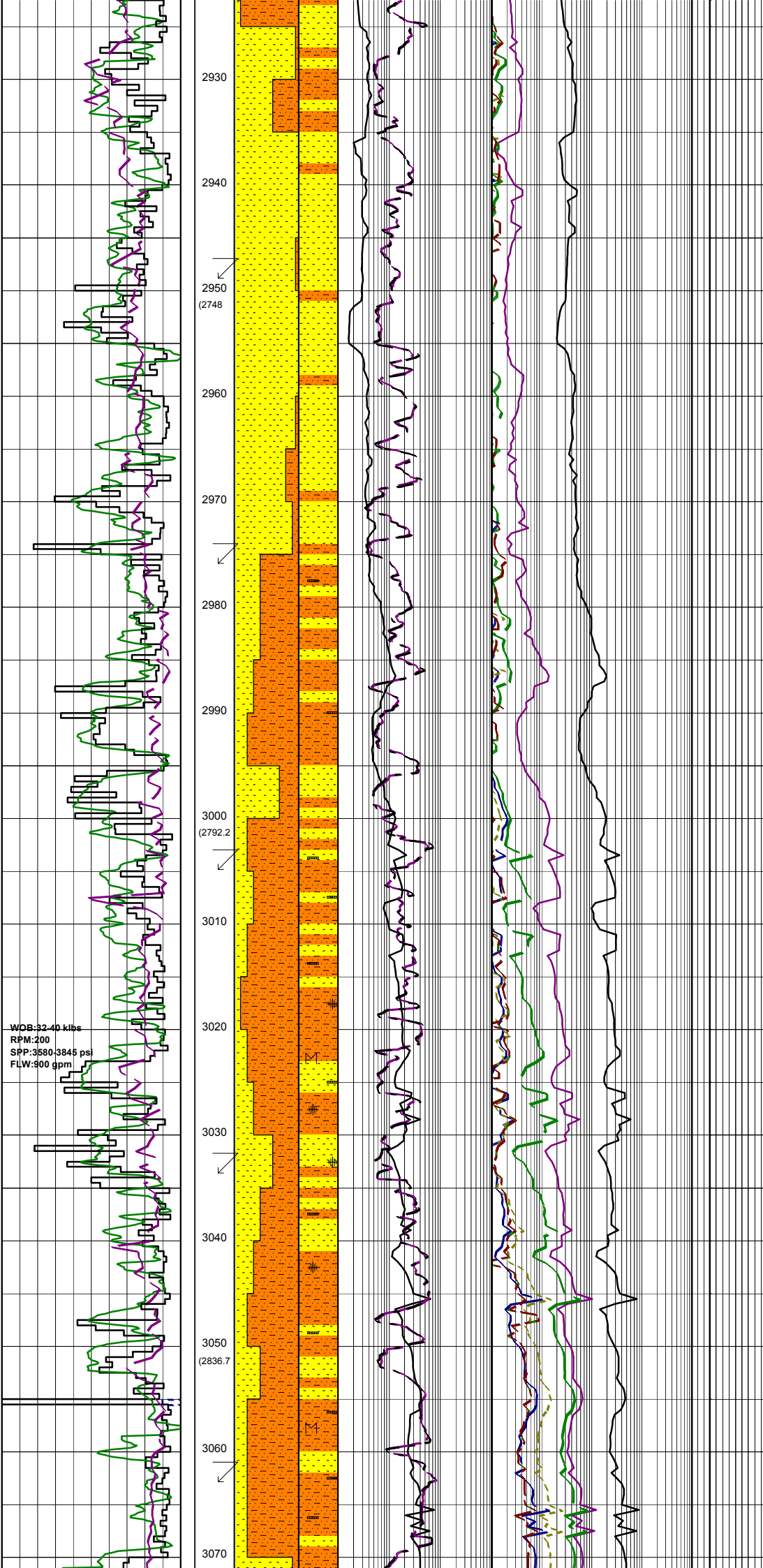
SILTSTONE:lt gry-lt brn/gry,
calc,tr arg,occ aren,tr peld
glauc,tr carb mat,v sft-sft,
sbbkly-amor.

SANDSTONE:clr-trmsl,med-crs,
occ v crs,pr srt,sbang-
sbrnd,sph-sbph,tr pyr cmt,lse,
gd inf por,no fluor.

COAL:blk,dll,silty,pyr,frm-brit,
bkly-hckly.

Survey @ 2919.4m: 28.69° 128.8Az

SILTSTONE:lt gry-lt brn/gry,



WOB:32.40 klbs
 RPM:200
 SPP:3580 3845 psi
 FLW:900 gpm

calc, tr arg, occ aren, tr peld
 glauc, tr carb mat, v sft-sft,
 sbbkly-amor.

SANDSTONE:clr-trnsl, tr opq, f-v
 crs, pr srt, sbang-sbrnd, sph-sbsp,
 tr pyr & sil cmt, lse, gd inf por,
 no fluor.

Survey @ 2948.1m: 28.12° 127.5Az

ARGILLACEOUS SILTSTONE:
 lt med gry-olv gry, brn/gry,
 arg, calc, tr carb mat, tr
 glauc, v sft-sft, amor-sbbkly.

SANDSTONE:cl-trnsl, f-v crs, v pr
 srt, sbang-sbrnd, sph-sbsp, sil &
 pyr cmt, pred kao mt, tr carb mat,
 v lse, v gd inf por, no fluor.

ARGILLACEOUS SILTSTONE:
 lt med gry-olv gry, brn/gry,
 arg, calc, tr carb mat, tr
 glauc, v sft-sft, amor-sbbkly.

Survey @ 2976.4m: 27.68° 128.1Az

SANDSTONE:clr-trnsl, tr opq,
 vf-med, mod srt, ang-sbang, tr carb
 mat, lse, fr-pr inf por, no fluor.

SILTSTONE:dk grn/gru-lt gry,
 tr off wh, aren i/p, tr-r carb spks,
 sft-v sft, com disp, sbbkly-amor.

SANDSTONE:clr-trnsl, tr opq,
 vf-med, mod srt, ang-sbang, tr carb
 mat, lse, fr-pr inf por, no fluor.

SILTSTONE:dk grn/gru-lt gry,
 tr off wh, aren i/p, tr carb spks,
 sft-disp, sbbkly-amor.

Survey @ 3005.1m: 27.37° 127.7Az

SANDSTONE:clr-trnsl,
 vf-med, mod srt, sbang-sbrnd, tr ang,
 tr carb spks, lse, tr sft aggs,
 fr-pr inf por, no fluor.

SILTSTONE:grn/gru-lt gry, tr
 dk grn/gry, aren i/p, tr carb spks
 sft-disp, sbbkly-amor.

SANDSTONE:clr-trnsl, tr opq,
 f-med, tr crs mod srt, sbang-sbrnd, tr
 kaol aggs, tr carb spks, tr pyr nod,
 lse, tr sft aggs, fr inf por, no fluor.

SILTSTONE:grn/gru-lt gry, tr
 dk grn/gry, aren i/p, tr mic, tr
 carb spks, tr pyr nod, sft-disp,
 sbbkly-amor.

Survey @ 3034.2m: 26.97° 128.8Az

SANDSTONE:clr, tr opq,
 vf-med, tr v crs, pr srt, sbang-md,
 tr wk sil cmt aggs, tr kaol mt, tr
 pyr nod, tr carb spks, tr qtz ovghs,
 lse, tr fri, gd inf por, no fluor.

SILTSTONE:lt gry-olv gry,
 aren i/p, mn calc, tr pyr nod &
 dissem, tr carb lams & spks, sft-
 frm, com disp, sbbkly-fiss, com amor.

SANDSTONE:clr-trnsl,
 tr opq, f-med, tr v crs, mod srt,
 rnd-sbang, tr kaol mt, tr pyr nod,
 tr carb spks, lse, tr fri, fr-gd inf
 por, no fluor.

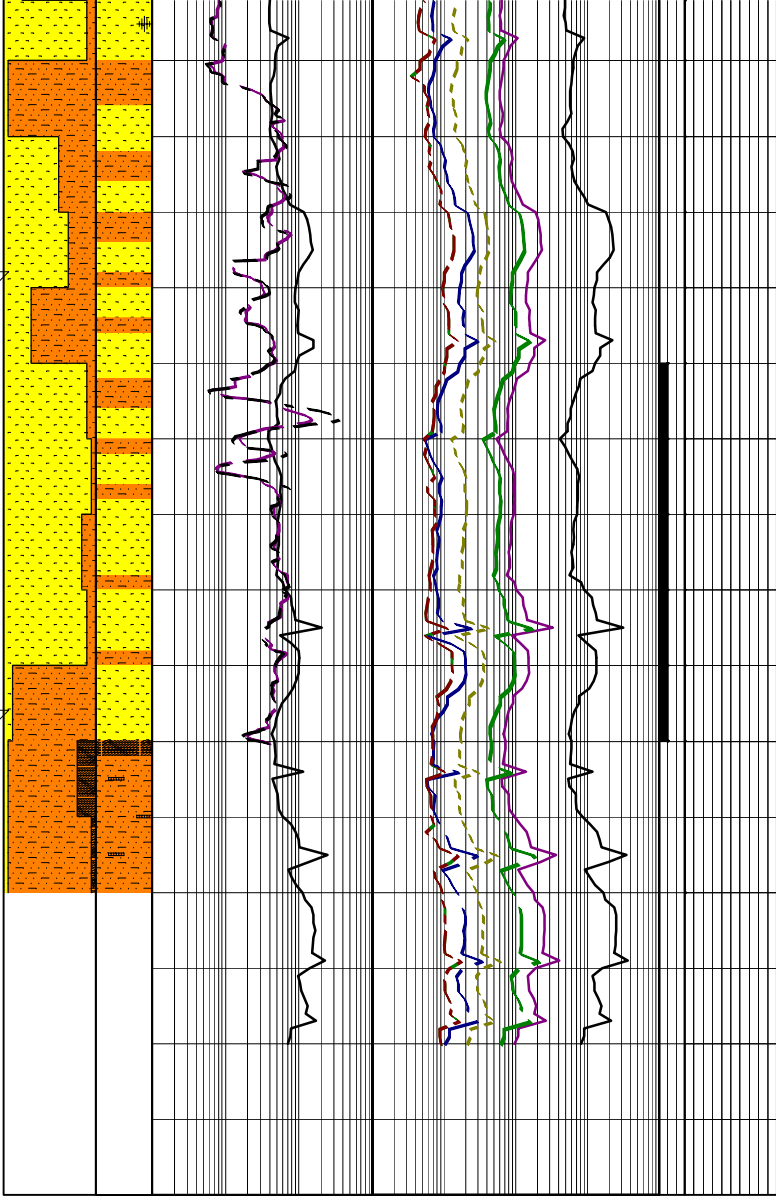
Survey @ 3062.6m: 26.42° 129.6Az

SILTSTONE:lt olv gry-grn/gry,
 tr olv blk, tr mic, tr carb mat, sft-
 disp, tr mod hd, sbbkly-amor, tr blk.

20-03-06

WOB: 30-47 ktlis
RPM: 198
SPP: 3480-3760 psi
FLW: 890 gpm

3080
3090
3100
(2881.6)
3110
3120
3130
3140
3150



SANDSTONE: cir-tmsl,
tr off wh, f-med, tr v crs, mod srt,
ang-sbang, tr kaol mtx, tr pyr cmt &
nod, tr carb spks, lse, tr fri, fr-gd inf
gd inf por, no fluor.

Survey @ 3091.1m: 25.88° 130.1Az

SILTSTONE: brn/gry-brn/blk,
com carb mat, arg l/p, n calc,
v sft-sft, occ frm, sbblky-amor.

SANDSTONE: cir-tmsl, vf-v crs,
v pr srt, sbang-sbrnd, occ ang,
sph-sbph, sil & pyr cmt, tr carb
mat, r mic, rr rd lith frags,
pred lse, v gd inf por, fluor.

FLUOR: 3095m-3120m; 5-15%, dll
yel/grn, no cut, no c/c, no r/r.

Survey @ 3119.9m: 25.24° 129.7Az

COAL: blk, vit, v hd & brit, sbconch-
blky.

SILTSTONE: lt brn/gry-brn/gry-
brn/blk, com crs carb mat, arg l/p,
v sft-sft, occ frm, sbblky-amor.